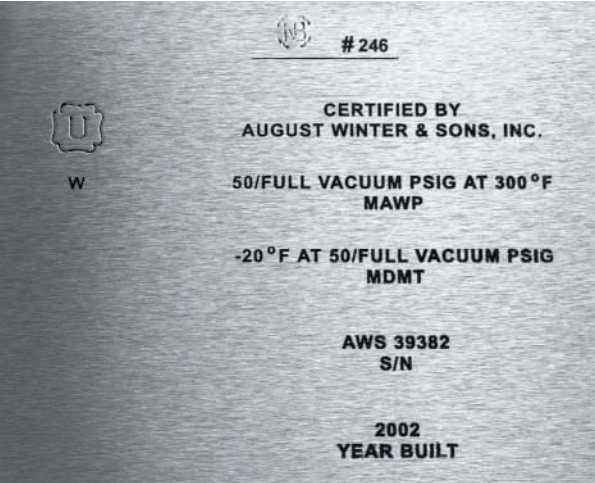
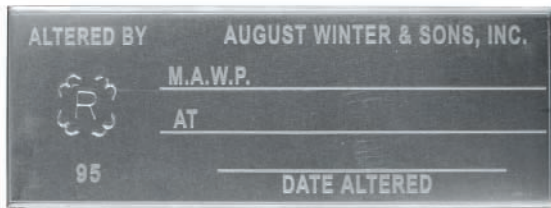




ASME PRESSURE VESSELS



Safe and cost effective ASME pressure vessel custom designs and fabrications start with August Winter & Sons' comprehensive consulting, design and calculation services. Quality is assured by our experience with ASME codes and construction standards. Accuracy is maintained for every fabrication aspect from cutting and rolling to welding and installation. Our capabilities include the use of virtually any material, for any capacity, and any application or industry. August Winter & Sons also performs repairs and alterations to ASME



pressure vessels per the National Board Inspection Code which requires an "R" stamp. Inspections of all welds are performed by August Winter & Sons' ASME certified weld and penetrant testing examiners.

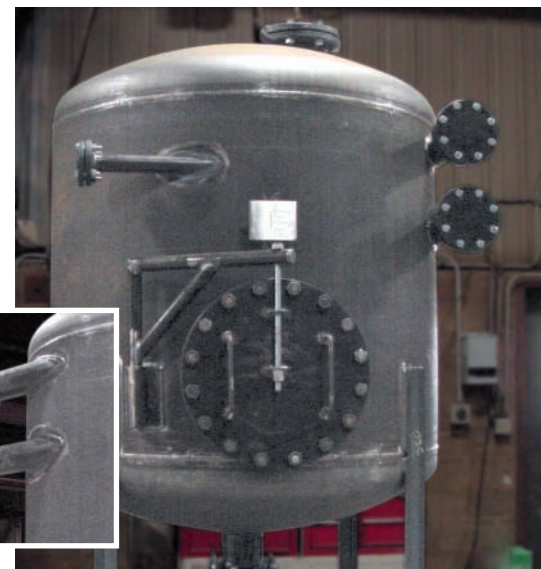


A high-pressure aluminum powder feeder used in the spray coating industry. This pressure vessel is designed for 500 PSIG at 150°F.



This 10" 304L stainless steel heat exchanger was manufactured for the resin production industry. It has 32 one-inch stainless steel tubes rolled into the tube sheets (see end view). It has a design pressure of 75 PSIG at 300°F.

This SA516 Grade 70 condensate tank was fabricated for the paper industry. Sophisticated workmanship created the true tangential nozzles required on this vessel. The design pressure is 50 PSIG at 300°F.





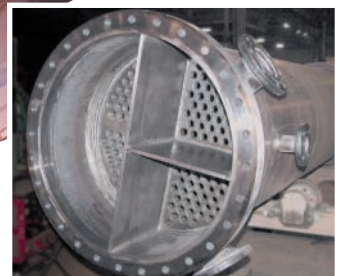
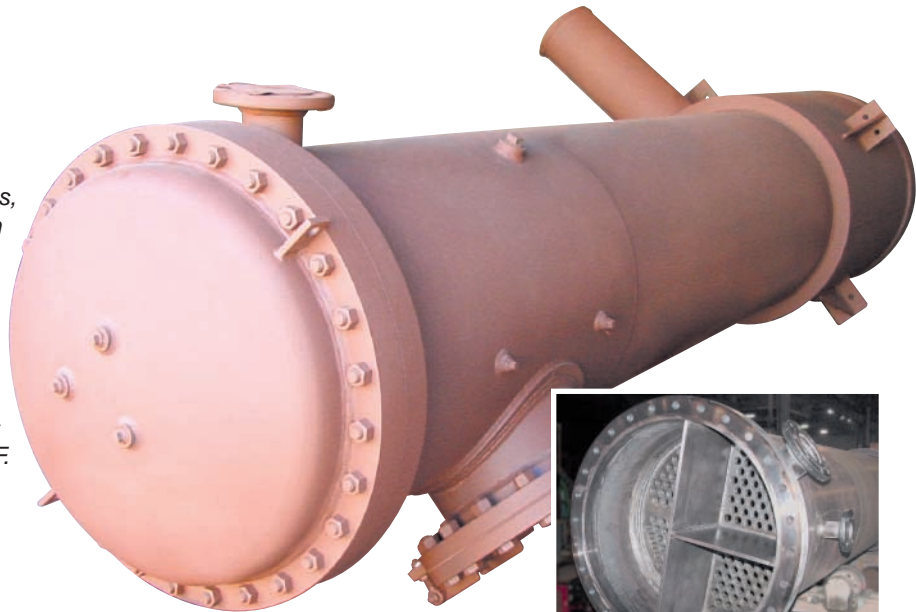
A 9,000-gallon capacity, SA516 Grade 70 pressure vessel quality steel, aqua ammonia tank (shown painted and unpainted) measures 92" in diameter by 20' overall length. It has a pressure rating of 36 PSIG at 200°F.



The 40- and 20-gallon 304L stainless steel tanks shown below also have stainless steel dimple jackets for heating. The tanks were designed for 100 PSIG at a temperature of 200°F.



This SA516 Grade 70, three-pass, shell-to-tube heat exchanger is 30" in diameter and approximately 13 1/2' overall length. It has an internal pressure rating of 136 PSIG at 500°F and an external pressure rating of 15 PSIG (full vacuum) at 100°F. Internally, it has 188 1/4" diameter tubes rolled into the tube sheets. The internal pressure rating of the tubes is 103 PSIG at 500°F.



AUGUST WINTER & SONS, INC.
MECHANICAL CONTRACTORS & FABRICATORS
www.augustwinter.com

2323 N. Roemer Road P.O. Box 1896 Appleton, Wisconsin 54912 Phone: 920-739-8881 Fax: 920-739-2230
5613 Schofield Avenue Schofield, WI 54476 Phone: 715-355-7555 Fax: 715-355-9048